



San Diego County Agriculture – How Sustainable and Resilient are We?

Karen Melvin
Deputy Agricultural
Commissioner/ Sealer

The San Diego County
Department of Agriculture,
Weights and Measures



San Diego County Department of Agriculture, Weights and Measures

Vision

Community partnerships for the advancement of agriculture, the environment, and consumer confidence.

Mission

Promote a thriving agricultural community, healthy residents and a balanced environment. Support a fair marketplace and consumer confidence in the accuracy of product weight, measure and price.



In San Diego County:

- Total agriculture value \$1.75 billion/year
- Agriculture covers 300,983 acres.
- Nursery and flower crops account for 63% or \$1.1 billion of the overall value.
- Fruit and Nut crops, including avocados and citrus, account for 19% or \$338 million.





Top Five Food Crops:

- Avocados \$158 million
- Citrus \$117 million
- Tomatoes \$92 million
- Eggs \$54 million
- Strawberries \$23 million





Our job is to prevent pest invasions.

We do this by:

- High Risk Pest Exclusion Program – Inspection of incoming nursery stock from areas that pose a higher risk for introduction of noxious pests.
- Detector Dog Teams – Package inspections at parcel facilities.





High Risk Pest Exclusion



Inspecting incoming plants.



Incoming plants on
quarantine hold.



High Risk Pest Exclusion



Buckets
of live
bugs!

Insect
galls on
avocado
leaves





Detector Dog Teams



Citrus from Florida



Reniform
Nematode





Catching "Bad Guys" on Imports



Semi-Slug

- 112 particularly bad pests found during inspection of imported plant shipments in 2012.



Red-Imported-Fire Ant



Magnolia White Scale

- These insects are not established in San Diego County or California.



Ficus Whitefly

- If they became established:
 - Significant economic impact on agriculture and/or,
 - Negative impact on the environment.



Lesser Snow Scale Colony



Jack Beardsley Mealybug



Duges Wax Scale



Fig Wax Scale



What does one little insect hurt?

- On average, a new exotic pest is introduced in the state every 40 days.
- Each year these insects or pathogens cause an estimated \$3 billion in agricultural damage in California alone.



Asian citrus psyllid



Huanglongbing or
Citrus Greening



If it's here, we want to catch it before it spreads!



McPhail



Fruit Flies



Jackson



Japanese Beetle



European Grapevine Moth



Light Brown Apple Moth



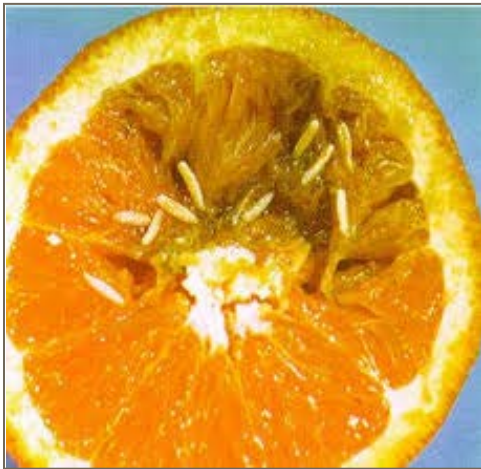
Gypsy Moth



Thriving Ag, Healthy Residents &
Balanced Environment



Early detection is the key!



QUARANTINE AREA



Thriving Ag, Healthy Residents & Balanced Environment

Quarantine Programs

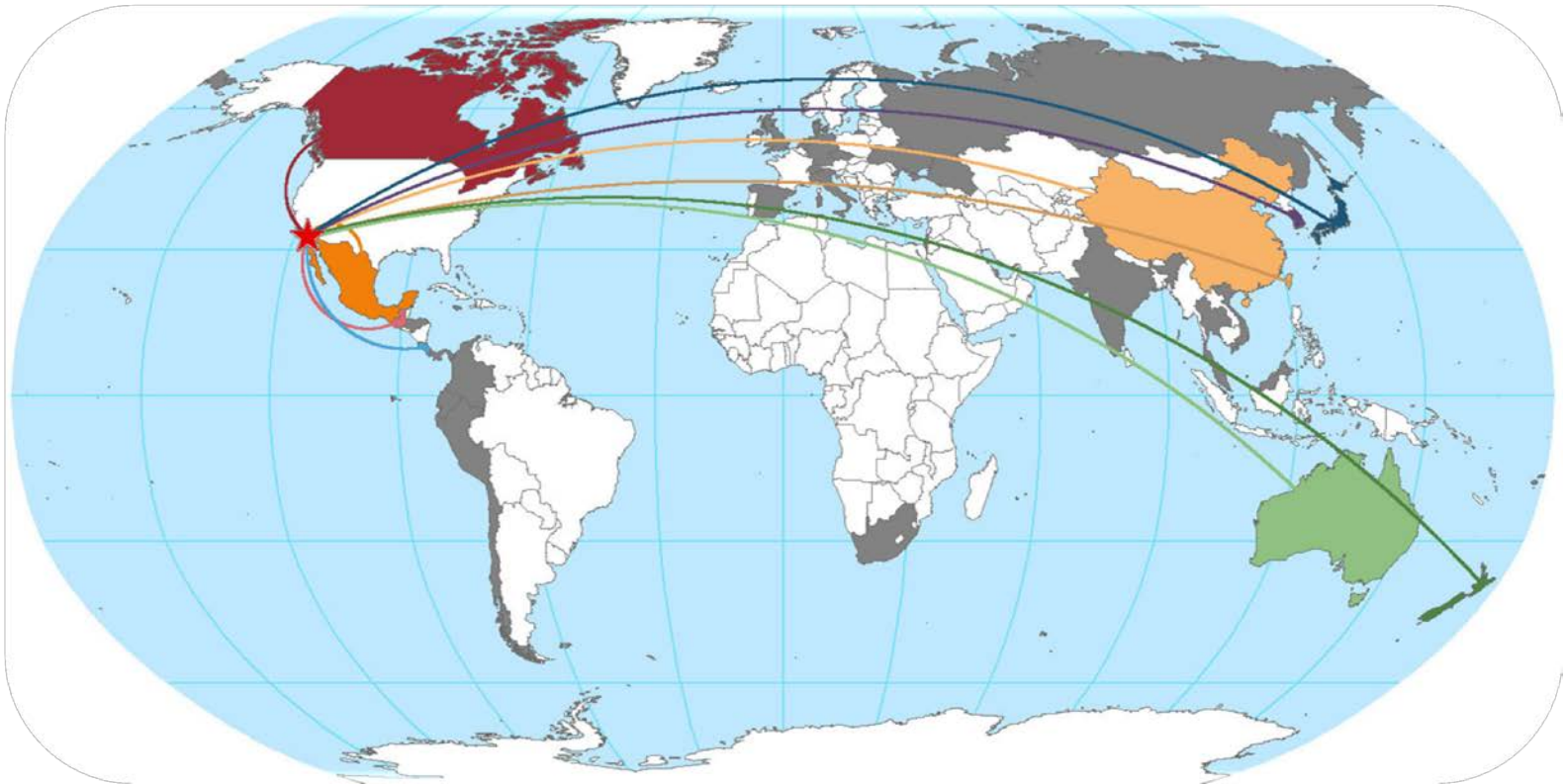


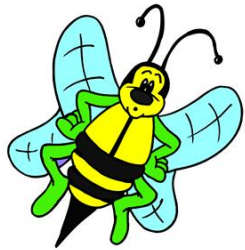
© 2004 THE OHIO STATE UNIVERSITY



Export Program

San Diego County agricultural products were shipped to 46 different countries in 2012! 8,645 shipments were certified by AWM inspectors.





Entomology & Plant Pathology Lab



Educational outreach to kids, adults, hobbyists, industry groups, growers, and other agencies.

Identify and process over 30,000 samples annually!





Child holding Titan beetle
in the Amazon.

California
Prionus beetle





Integrated Pest Control

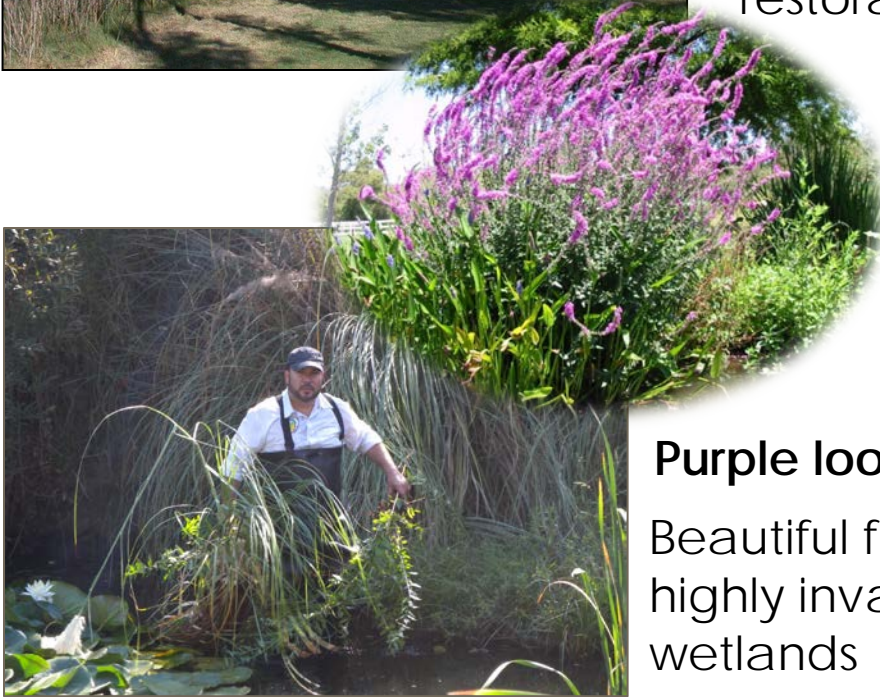


Controls
invasive
weeds and
does
habitat
restoration.



Yellow starthistle

Nasty spines that repel
animals and endangers
range land.



Purple loosestrife

Beautiful flowers but
highly invasive in
wetlands





San Diego County's Ag-Urban Interface



The constant
challenge to help
ag thrive and keep
residents healthy!



Tomato Field



Egg Ranch



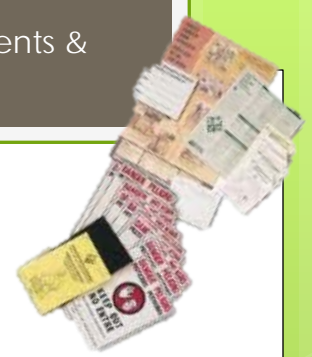
Herb Farm





Our job is to make sure
pesticides are applied safely.





Ensuring Worker Health and Safety



Safety Glasses or Goggles

Chemical Resistant Coveralls



Chemical Resistant Rubber Gloves

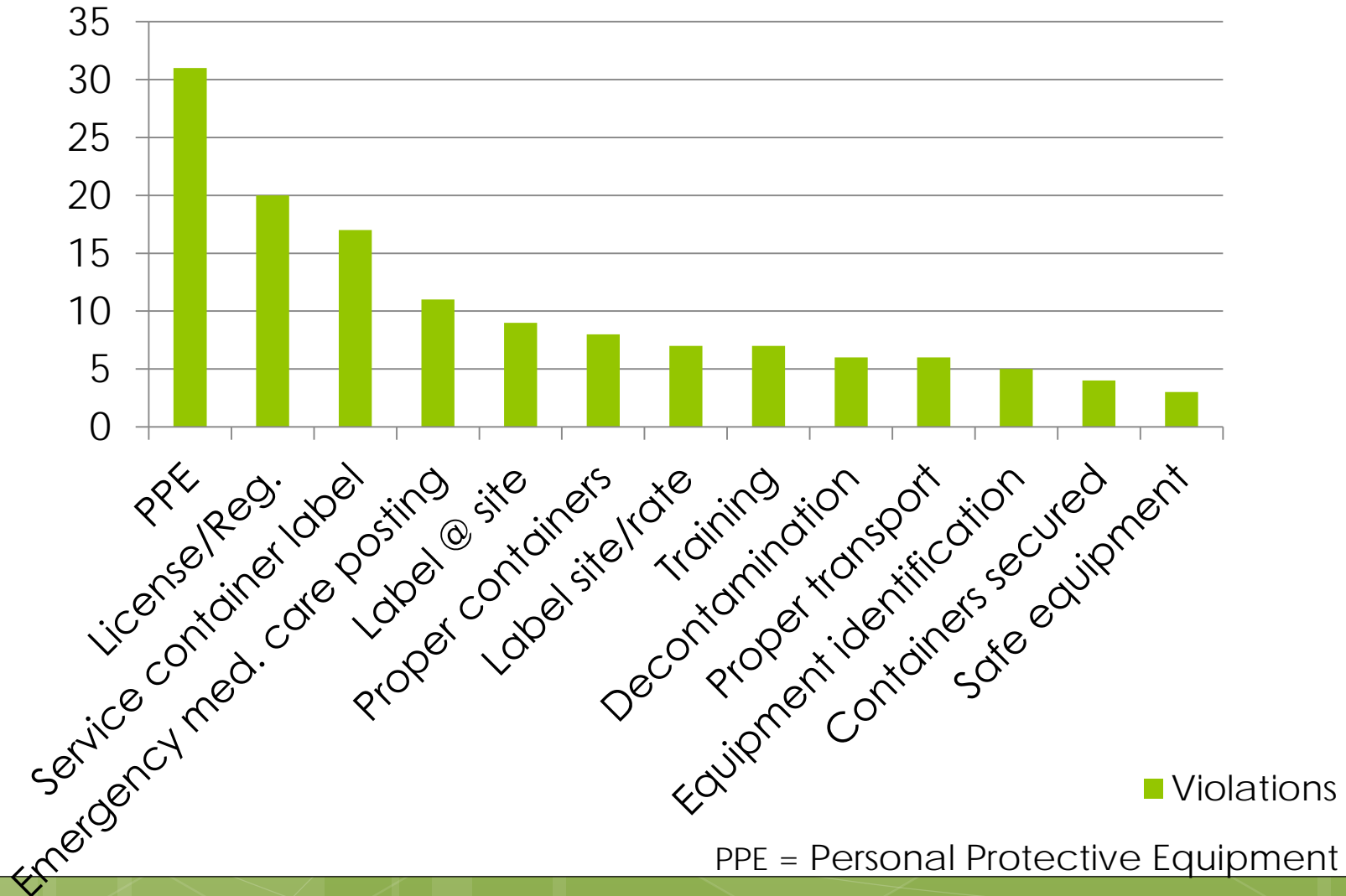
Respirator

Chemical Resistant Rubber Boots





Common Violations 2012-13: Ag/Landscape Applications





We inspect Certified Producers and Certified Farmers' Markets



Ensuring that producers
are growing their own
produce for sale at
Certified Farmers'
Markets.



Inspect all 57 Certified Farmers'
Markets at least twice a year.





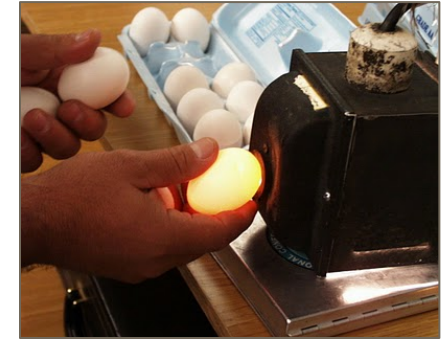
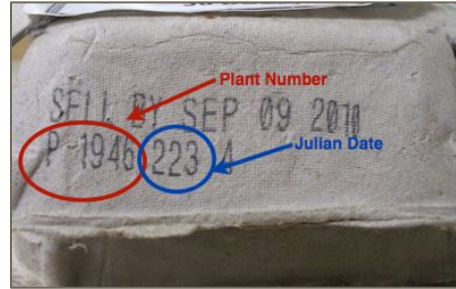
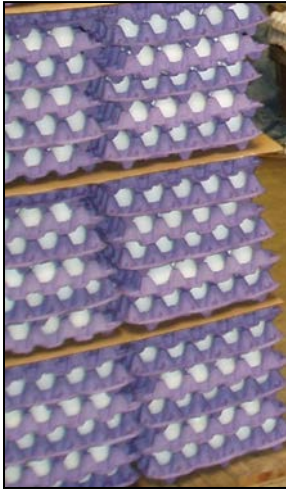
Thriving Ag, Healthy Residents & Balanced Environment

Organic Registration and Inspection





Egg Inspection





County Initiatives & Partnerships

- "Live Well, San Diego!"
- San Diego Food System Alliance
- Land Use and Environmental Group's Health in All Policies
 - Food Safety in a Sustainable Local Food System
 - Local Small Farms
 - Safe Use of Pesticides
 - Produce, Sell and Serve locally





Thriving Ag, Healthy Residents &
Balanced Environment

County of San Diego
Department of Agriculture, Weights & Measures
9325 Hazard Way Suite 100
San Diego, CA 92123
(858) 694-2739
www.sdcawm.org

